

# Governor Dashboard (2013)

## West Hatch High School

LA: Essex

DFE: 8815405

Date produced: October 2013

Version 1

The Governor Dashboard has been produced by FFT, working in partnership with the National Governors' Association and the Wellcome Trust. The dashboard will help school governors to hold schools to account, support and challenge the leadership team and make more informed strategic decisions.

The dashboard can be used to answer **six key questions**:

1. How does attainment and pupil progress compare to the national average?
2. How are we performing in different subjects?
3. Do we have any under-performing pupils?
4. How might the context of our school affect our performance?
5. How does pupil attendance compare to the national average?
6. What are the strengths and weaknesses of our school?

## Guidance for governors

**Gauges:** underneath the gauges we indicate whether results and progress are in line with the national average, or significantly above or below the national average.

**Strengths & Weaknesses:** these are relative to your school and calculated using Value Added Average Point Score over 3 years (minimum 5 pupils in a group).

**Statistical significance:** green stars (★) and red circles (●) highlight where pupil progress is significantly above or below the national average.

**Small pupil cohorts:** for small pupil cohorts we will suppress the actual data with a diamond (◆). Where it is not possible to calculate a figure or if data is not available this will be shown by a dash (-).

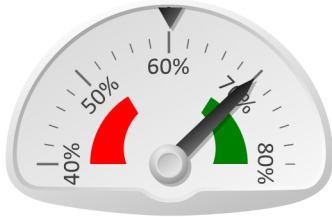
**Data sources:** the governor dashboard is generated using data from FFTLive which includes data sourced from the DFE (National Pupil Database) and data calculated by FFT. The headline performance indicators will be consistent with RAISEonline and the DFE School Performance Tables and data.

Further support materials for governors, including a brief training guide can be downloaded from the FFT website at [www.fft.org.uk](http://www.fft.org.uk)

# West Hatch High School (2013)

## Pupil Results - Attainment (2013)

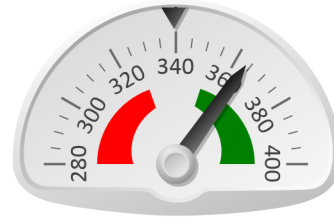
% 5+ A\*-C incl Eng & Maths



**70%**

Results are significantly above the national average (60%)

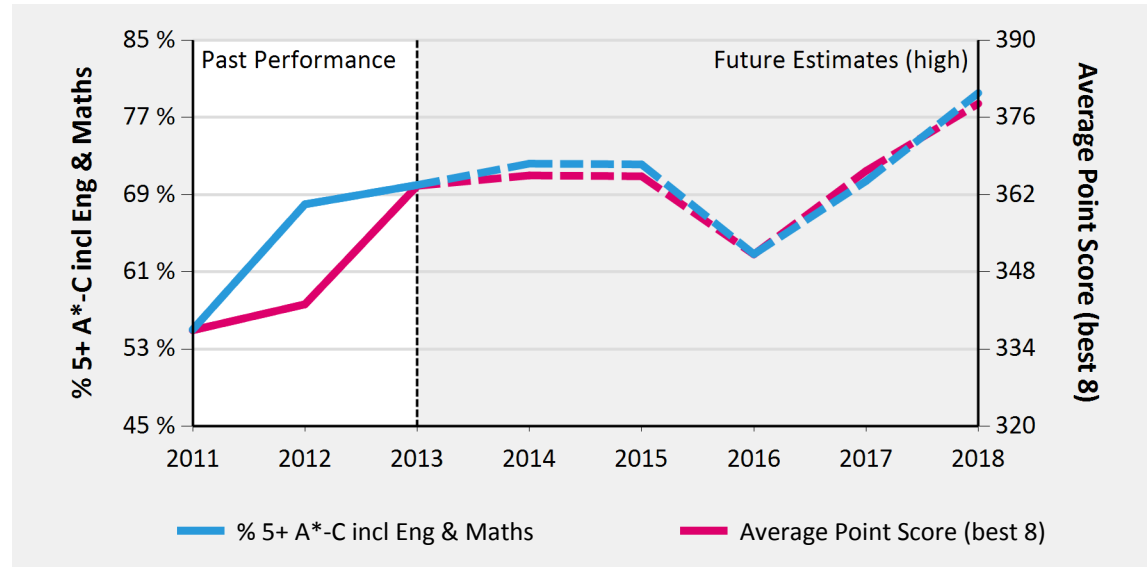
Average Point Score (best 8)



**364**

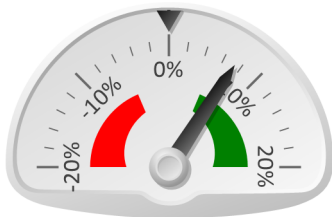
Results are significantly above the national average (339)

## Key Stage 4 Headline Performance



## Pupil Progress - Achievement (2013)

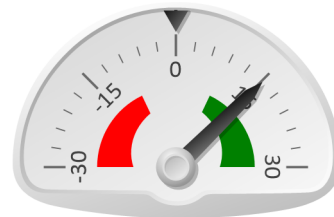
% 5+ A\*-C incl Eng & Maths



**7%**

Progress is significantly above the national average of zero

Average Point Score (best 8)



**15**

Progress is significantly above the national average of zero

## Key Stage 4 Performance Summary

	Actual Results			Pupil Progress (Act vs Est)		
	2011	2012	2013	2011	2012	2013
Number of Pupils	189	183	186	-	-	-
% 5+ A*-C incl Eng & Maths	55% ★	68% ★	70%	● -7%	★ 4%	★ 7%
Average Point Score (best 8)	337	342 ★	364	● -10	● -10	★ 15
Average Grade (GCSE only)	C ★	C ★	C+	0.0	0.1	★ 0.3
% pupils achieving 5+ A*-A	14%	15%	18%	-1%	1%	3%
% 3 Levels Progress - English	75%	69% ★	82%	1%	0%	★ 10%
% 3 Levels Progress - Maths	● 56%	★ 78% ★	78%	● -11%	★ 6%	4%

## Relative Strengths and Weaknesses (3 years)

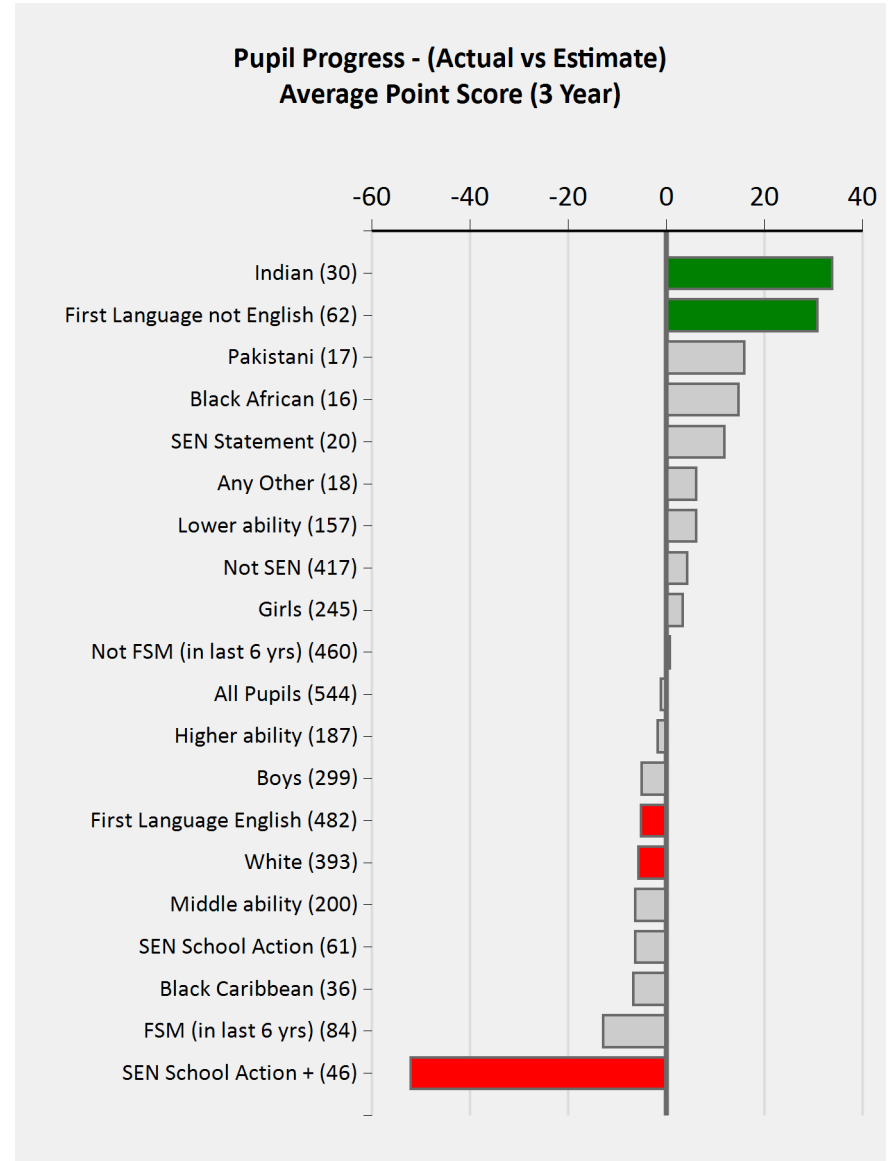
	Stronger Areas	Weaker Areas
<b>Pupil Groups</b>	Indian First Language not English Pakistani	SEN School Action + FSM (in last 6 yrs) Black Caribbean
<b>Subjects</b>	Physical Education/Sports St Music Chemistry	D&T Product Design D&T Textiles Technology History

# West Hatch High School (2013)

## GCSE subject performance (2013)

	Pupils	Actual Results			Pupil Progress (Act vs Est)		
		Average Grade	%A*-A	%A*-C	Average Grade	%A*-A	%A*-C
Art & Design	38	B	34%	100%	★ 0.6	★ 12%	★ 20%
Biology	59	A	69%	100%	★ 0.7	★ 28%	★ 8%
Bus. Studs:Single	43	C-	2%	56%	0.0	-8%	-1%
Chemistry	59	A	69%	100%	★ 0.8	★ 27%	★ 9%
D&T Resist. Matrls	22	C	0%	73%	0.3	-12%	14%
D&T Textiles Tech.	14	C-	14%	64%	-0.6	-10%	-13%
Drama & Theat.Stds	22	C+	23%	68%	0.0	4%	-5%
Economics	27	C+	11%	85%	★ 0.5	-6%	★ 18%
English	53	D+	0%	45%	★ 0.5	-1%	★ 15%
English Language	123	B	24%	97%	★ 0.2	1%	★ 11%
English Literature	131	B-	25%	78%	0.0	2%	-4%
French	47	C-	9%	57%	0.0	-5%	-2%
Geography	53	B-	26%	85%	0.3	-1%	★ 12%
History	55	D+	15%	51%	● -0.8	● -12%	● -16%
Mathematics	186	C+	22%	78%	★ 0.4	★ 5%	★ 9%
Media/Film/TV Stds	20	C+	15%	65%	0.2	-1%	-4%
Physics	59	A	66%	100%	★ 0.7	★ 24%	★ 8%
Religious Studies	43	B+	49%	88%	★ 0.9	★ 20%	★ 17%
Science (Core)	115	C	8%	63%	★ 0.5	4%	★ 14%
Science: Additional	87	C+	6%	79%	★ 0.6	-1%	★ 21%
Spanish	34	C	18%	65%	0.1	0%	-1%
Sport/P.E. Studies	30	B	30%	87%	★ 0.8	★ 14%	★ 18%

## Pupil groups - achievement over 3 years



# West Hatch High School (2013)

## Pupil Context (Year 11, 2013)

		Pupils	School	National
<b>Summary</b>	All Pupils	186	100%	100%
	Girls	89	48%	49%
	Boys	97	52%	51%
<b>Prior Attainment</b>	Higher ability	60	32%	32%
	Middle ability	66	35%	35%
	Lower ability	57	31%	33%
<b>SEN</b>	SEN School Action	12	6%	11%
	SEN School Action +	13	7%	6%
	SEN Statement	7	4%	4%
	Not SEN	154	83%	79%
<b>Free School Meals</b>	FSM (in last 6 yrs)	32	17%	26%
	Not FSM (in last 6 yrs)	154	83%	74%
<b>Ethnicity</b>	White	126	68%	80%
	Black Caribbean	12	6%	3%
	Black African	10	5%	4%
	Indian	12	6%	2%
	Pakistani	6	3%	3%
	Other Asian	6	3%	2%
<b>First Language</b>	First Language not English	26	14%	12%
	First Language English	160	86%	88%
<b>Mobility</b>	Joined school in Yrs 10 or 11	4	2%	2%

## School Absence (Year 7 to Year 11, 2013)

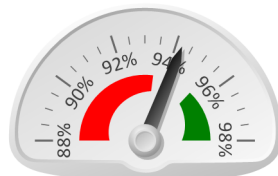
		Pupils	Absence		Persistent Absentees	
			School	National	School	National
<b>Summary</b>	All Pupils	955	5%	6%	4%	7%
	Girls	454	5%	6%	4%	8%
	Boys	500	6%	6%	4%	7%
<b>Prior Attainment</b>	Higher ability	256	4%	4%	1%	3%
	Middle ability	340	5%	6%	4%	6%
	Lower ability	331	7%	8%	8%	13%
<b>SEN</b>	SEN School Action	102	6%	7%	8%	11%
	SEN School Action +	54	7%	10%	7%	18%
	SEN Statement	34	8%	8%	9%	13%
	Not SEN	764	5%	5%	4%	6%
<b>Free School Meals</b>	FSM (in last 6 yrs)	203	7%	8%	11%	14%
	Not FSM (in last 6 yrs)	751	5%	5%	3%	5%
<b>Ethnicity</b>	White	630	6%	6%	5%	8%
	Black Caribbean	60	4%	6%	3%	8%
	Black African	52	3%	4%	4%	3%
	Indian	54	5%	4%	2%	3%
	Pakistani	45	7%	5%	11%	5%
	Other Asian	33	6%	5%	6%	4%
<b>First Language</b>	First Language not English	101	5%	5%	3%	5%
	First Language English	853	6%	6%	5%	8%

Year 7 Attendance



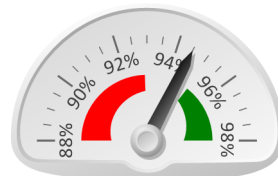
95.4%

Year 8 Attendance



94.2%

Year 9 Attendance



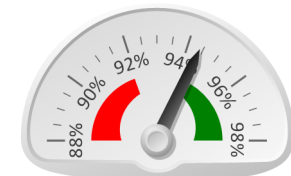
94.5%

Year 10 Attendance



94.0%

Year 11 Attendance



94.4%